



## Product Data Sheet

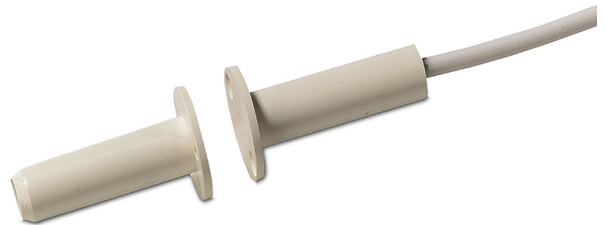
# DC106

## Recessed mount contact - flanged housing

The DC106 recessed contacts are designed for applications where the added integrity of mounting screws is needed. The units can be used in wooden and metal frame doors and windows.

### Easy Installation

The two mounting holes provide additional strength to prevent the contact and magnet from becoming dislodged due to environmental changes. This can occur when the door or window frames become warped and misaligned from moisture or the settling of a building.



### Standard Features

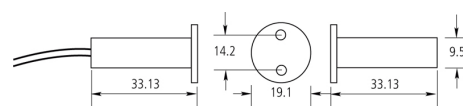
- Flange mounting for positive mounting
- Attractive, added security of recessed installation
- Easy installation
- Standard 2m wire length
- Tamper loop provided
- Built-in resistors available to special order

# DC106

## Recessed mount contact - flanged housing

### Specifications

Operating gap	12 mm max.
Connections	4 wires, 2 m
Contact type	NC
Dimensions	
Housing (Ø x H)	19 x 33 mm
Colour	White



### Ordering Information

Part No.	Description
DC106	Recessed mount contact - flanged housing

